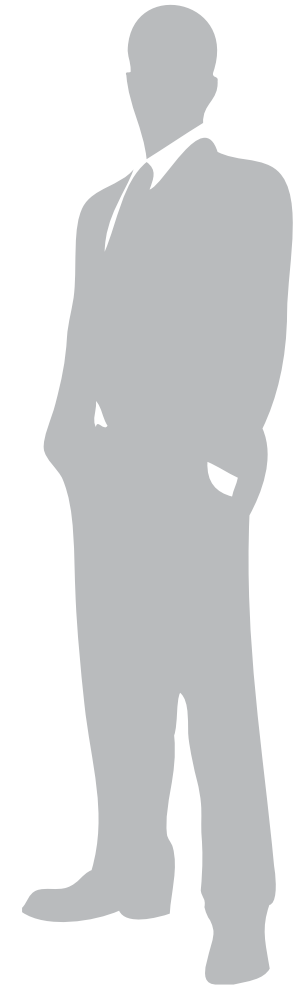
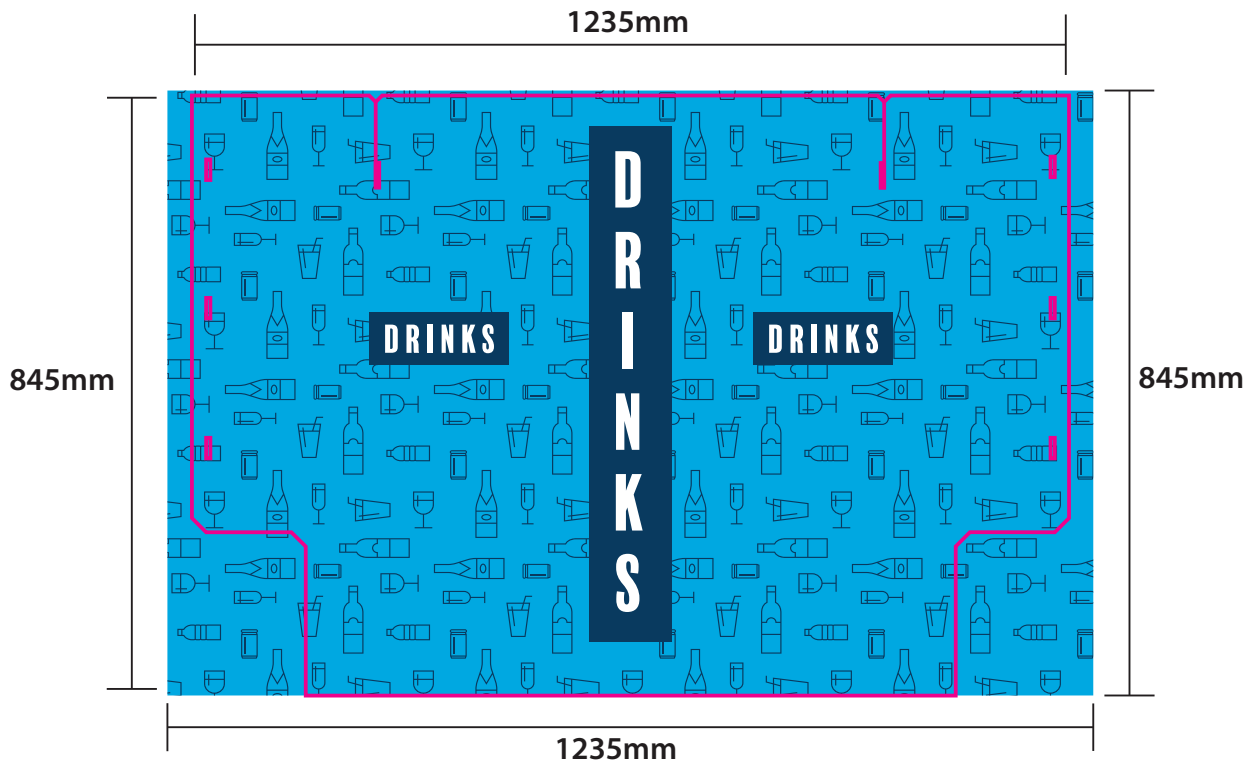


Outdoor Trolley Artwork Guide



Please see overleaf for TEMPLATES and instructions regarding bleed.

Preparing and Sending Artwork

Step 1

Create Your Artwork

We recommend using Adobe InDesign, Adobe Illustrator, Adobe Photoshop or CorelDraw to create your artwork. Use CMYK colour format (Not RGB).



Step 2

Preferred File format

Supply a high-res PDF file for printing. All fonts converted to outlines / paths. Images to be sized 150dpi at 100%.



Step 3

Colour Matching

Where a specific colour is to be matched, please provide a CMYK breakdown and Pantone PMS number.

Step 4

File Submission Options

Under 10mb? Email
Direct to your Displays 2 Go sales person or sales@displays2go.com.au

Under 2Gb? 'WeTransfer'
displays2go.wetransfer.com
(Free service for files up to 2Gb)

Over 2Gb? Courier
Displays 2 Go
60-62 Sawyer Lane
Artarmon
NSW 2064

1235mm

845mm

DISPLAYS2GO ARTWORK SPECIFICATIONS
WE MAKE YOU LOOK GOOD

Outdoor Trolley

TRIM AREA – MAGENTA solid line



Do not put important graphics in this coloured area.
This area is obscured by framing.
The print however, still runs underneath.

BLEED AREA – GREEN dashed line
(this has been placed on the artwork layer and can be given a fill colour or used as a clipping mask for your background)

IMPORTANT INFORMATION:

- Leave the templates VISIBLE on finished artwork, set to overprint
- Do not include crop marks
- Convert all fonts to paths/outlines
- Convert all spot colours to CMYK, except template lines
- Final document to be saved as a Press Quality PDF
- Minimum resolution of 150ppi at 100%

REAR

LEFT

FRONT

RIGHT

REAR